



Mentoring Project 2014
France-Portugal-Spain

PREPARE YOUR OWN DATA PAPER



Katia Cezón
GBIF Spain, Coordination Unit
katia@gbif.es
Real Jardín Botánico, Madrid 2014

SUMMARY

1. What is a data paper?
2. What we need?
3. How to publish

WHAT IS A DATA PAPER?

DATA PAPER

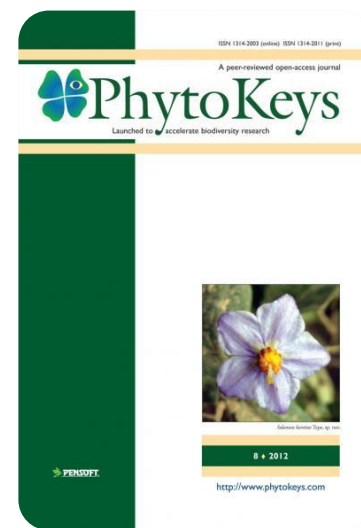
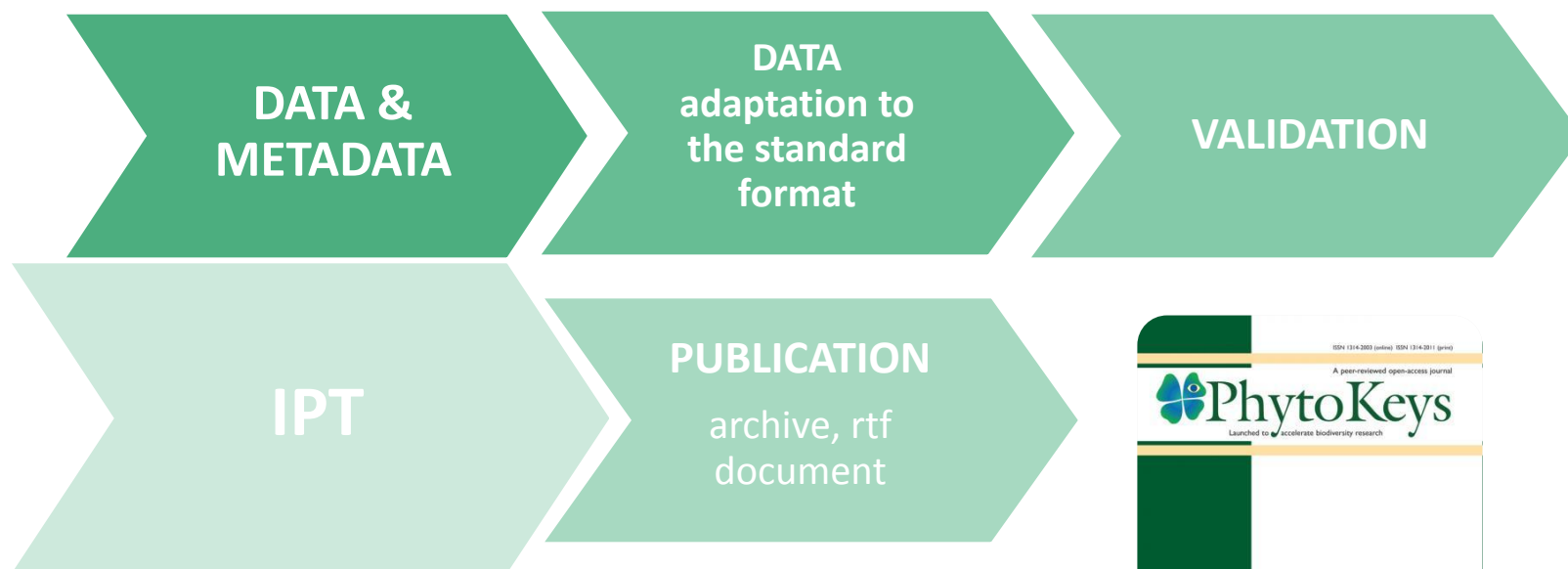
A Data Paper is a scholarly journal publication whose primary purpose is to **describe a dataset or a group of datasets**, rather than to report a research investigation.

As such, it contains facts about data, not hypotheses and arguments in support of the data, as found in a conventional research article. Its purposes are three-fold:

- to provide a citable journal publication that brings scholarly credit to data publishers
- to describe the data in a structured human-readable form
- to bring the existence of the data to the attention of the scholarly community.

WHAT WE NEED

DATA PAPER



IPT DATA & METADATA

IPT: DATA & METADATA



GBIF INTEGRATED PUBLISHING TOOLKIT (IPT)


free and open access to biodiversity data

Create New Resource

You can create a new blank resource, upload an existing resource saved as a zipped Darwin Core archive, or upload an existing IPT resource using its zipped resource configuration folder. Please refer to the User Manual for more specific instructions. A short name is required as an identifier for the resource within this IPT installation. Please use only alphanumeric characters, hyphens, or underscores.

Shortname

Type

 Select a type (optional) ▾

Optional archived resource to load:

No file selected.



IPT: DATA & METADATA



IPT y servicio de alojamiento asociado de GBIF.ES

GBIF INTEGRATED PUBLISHING TOOLKIT (IPT)

free and open access to biodiversity data

Logged in as [katia@gbif.es](#) [Account](#) [Logout](#) **ENGLISH**

Create New Resource

You can create a new blank resource, upload an existing resource saved as a zipped Darwin Core archive, or upload an existing IPT resource using its zipped resource configuration folder. Please refer to the User Manual for more specific instructions. A short name is required as an identifier for the resource within this IPT installation. Please use only alphanumeric characters, hyphens, or underscores.

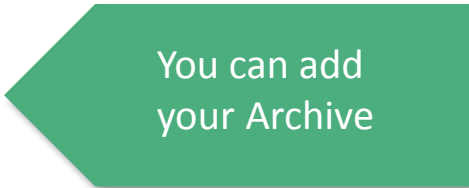
Shortname

Type



Optional archived resource to load:

No se ha seleccionado ningún archivo.



You can add
your Archive

IPT: DATA & METADATA

Overview: **moss**

This is the overview page for the *moss* resource. Please start by uploading and mapping source data to generate and publish a Darwin Core archive. Don't forget to fill in the mandatory metadata. Published resources can be registered with the GBIF Network. Registered resources can be removed, but they cannot be reverted to a private state.

Source Data

No se ha seleccionado ningún archivo

darwincorea [nie] 21 MB, 56,051 rows, 32 columns. 25/04/14

Darwin Core Mappings

Metadata

The resource is missing mandatory metadata!

can upload delimited text files (csv, tab, and files using (re)upload a file, please select the local file then click in your local network. To create a new SQL source,

Adding the source data file

Mapping between the source data and Darwin Core Terms

Adding the metadata

IPT: DATA & METADATA

[Home](#)[Manage Resources](#)[Administration](#)[About](#)Resource Title [moss](#)

Basic Metadata

The resource title and description are required. The resource's three main contact's must also be described here: Resource contact, resource creator and metadata provider. For each contact you must supply at least a last name, a position or an organisation before you can make the resource public. The person(s) or organisation(s) responsible for the creation of the resource as it appears in the IPT and for effectively publishing the resource should add themselves as an associated party with role 'publisher'.

Title*

Description*

Metadata Language



Resource Language

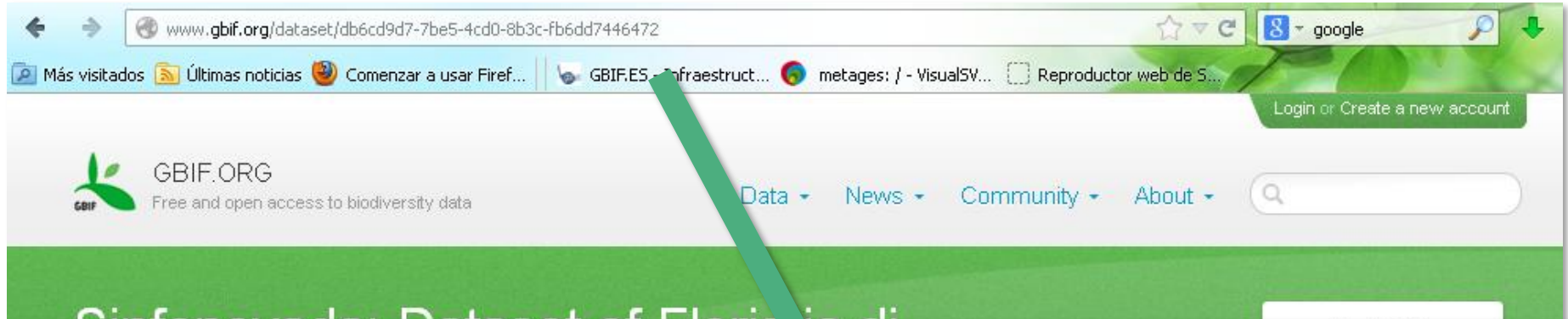


Section

[Basic Metadata](#)

[Geographic Coverage](#)[Taxonomic Coverage](#)[Temporal Coverage](#)[Keywords](#)[Associated Parties](#)[Project Data](#)[Sampling Methods](#)[Citations](#)[Collection Data](#)[External links](#)[Additional Metadata](#)

IPT: DATA & METADATA



Collection Data

Please enter the collection metadata for the resource.

Collection Name*

Parent Collection Identifier*

Collection Identifier*

Specimen preservation method

Curatorial Units

Please enter the counts of curatorial units covered by the resource. You may the count as a range or as a value with an uncertainty. Examples of units include skins, sheets, pins, boxes, jars.

Section

- [Basic Metadata](#)
- [Geographic Coverage](#)
- [Taxonomic Coverage](#)
- [Temporal Coverage](#)
- [Keywords](#)
- [Associated Parties](#)
- [Project Data](#)
- [Sampling Methods](#)
- [Citations](#)
- [Collection Data](#)

IPT: DATA & METADATA



www.gbif.org/dataset/db6cd9d7-7be5-4cd0-8b3c-fb6dd7446472

Más visitados Últimas noticias Comenzar a usar Firef... GBIF.ES - Infraestruct... metages: / - Visual5V... Reproductor web de S...

GBIF.ORG
Free and open access to biodiversity data

Data News Community About

Sinfonevada: Dataset of Floristic di...
Occurrence dataset published by Sierra Nevada Global Change Observatory, Andalusian Environmental Cent...

7.920 Occurrences
View occurrences

Alternative Identifiers

Alternative identifiers that are used to label this resource, possibly from different data management systems, can be listed here.

Alternative Identifier



db6cd9d7-7be5-4cd0-8b3c-fb6dd7446472



[Remove this alternative identifier]

[Associated Parties](#)

[Project Data](#)

[Sampling Methods](#)

[Citations](#)

[Collection Data](#)

[External links](#)

[Additional Metadata](#)

PUBLICATION

PUBLICATION


[Home](#)[Manage Resources](#)[Administration](#)[About](#)

Overview: moss

This is the overview page for the *moss* resource. Please start by uploading and mapping source data to generate and publish a Darwin Core archive. Don't forget to fill in the mandatory metadata. Published resources can be registered with the GBIF Network. Registered resources can be removed, but they cannot be reverted to a private state.

Published Release

When publishing a new release, a new EML version, RTF version, and a Darwin Core Archive (DwC-A) will be created. A DwC-A bundles all source files with mappings and metadata in one zipped archive.

 *Before you can publish a resource you must provide the required basic metadata.*

Visibility **Private**



This resource is private to managers. To make this resource available to everyone, please make it public.

Resource Managers



Resources can be managed by several managers. You can grant other managers permission to modify moss.

CreatorKatia Cezón, katia@gbif.es

PUBLICATION

Published Release

Auto-publishing  

When publishing a new release, a new EML version, RTF version, and a Darwin Core Archive (DwC-A) will be created. A DwC-A bundles all source files with mappings and metadata in one zipped archive.

Last Publication

Version 17 from Feb 5, 2014 [Publication Log](#)

Darwin Core Archive

[download](#) (184 KB) 7,920 records

EML

[download view](#) (51 KB)

RTF

[download](#) (33 KB) 

Visibility *Registered*

This public resource is registered with GBIF. To change this status you must delete the entire resource and contact the [GBIF Help Desk](#).

Resource Key

db6cd9d7-7be5-4cd0-8b3c-fb6dd7446472 [GBRDS](#)

Organisation

Sierra Nevada Global Change Observatory, Andalusian Environmental Center, University of Granada, Regional Government of Andalusia

Organisation Contact

Francisco Javier Bonet García, fjbonet@ugr.es

Organisation Key

4b4b2111-ee51-45f5-bf5e-f535f4a1c9dc

Endorsing Node

GBIF Spain

PUBLICATION

Sinfonevada: Dataset of Floristic diversity in Sierra Nevada forest (SE Spain)

Antonio Jesús Pérez Luque¹, Regino Jesús Zamora Rodríguez², Francisco Javier Bonet García¹, Ramón Pérez Pérez¹, Rut Aspizua Cantón³, Juan Lorite⁴

1 Laboratorio de Ecología (iEcolab), Centro Andaluz de Medio Ambiente (CEAMA), Universidad de Granada, Avenida del Mediterráneo s/n, 18006, Granada, Spain; 2 Grupo de Ecología Terrestre, Departamento de Ecología, Universidad de Granada, Facultad de Ciencias, Campus de Fuentenueva s/n, 18071, Granada, Spain; 3 Agencia de Medio Ambiente y Agua de Andalucía. Consejería de Agricultura, Pesca y Medio Ambiente. Junta de Andalucía, C/ Joaquina Egüaras, 10, 18003, Granada, Spain; 4 Departamento de Botánica, Universidad de Granada, acultad de Ciencias, Campus de Fuentenueva s/n, 18071, Granada, Spain

Corresponding author(s): Antonio Jesús Pérez Luque (ajperez@ugr.es)

Received {date}; Revised {date}; Accepted {date}; Published {date}

Citation: Combination of authors, year of data paper publication (in parentheses), Title, Journal Name, Volume, Issue number (in parentheses), and doi of the data paper.

PUBLICATION

PhytoKeys 35: 1–15 (2014)

doi: 10.3897/phytokeys.35.6363

www.phytokeys.com

DATA PAPER

A peer-reviewed open-access journal
 **PhytoKeys**
Launched to accelerate biodiversity research

Sinfonevada: Dataset of Floristic diversity in Sierra Nevada forests (SE Spain)

Antonio Jesús Pérez-Luque¹, Francisco Javier Bonet¹, Ramón Pérez-Pérez¹,
Rut Aspizua³, Juan Lorite⁴, Regino Zamora^{1,2}

1 Laboratorio de Ecología (iEcolab), Instituto Interuniversitario de Investigación del Sistema Tierra en Andalucía (CEAMA), Universidad de Granada, Avenida del Mediterráneo s/n, 18006, Granada, Spain **2** Grupo de Ecología Terrestre, Departamento de Ecología, Universidad de Granada, Facultad de Ciencias, Campus de Fuentenueva s/n, 18071, Granada, Spain **3** Agencia de Medio Ambiente y Agua de Andalucía. Consejería de Medio Ambiente y Ordenación del Territorio. Junta de Andalucía, C/ Joaquina Egüaras, 10, 18003, Granada, Spain **4** Departamento de Botánica, Universidad de Granada, Facultad de Ciencias, Campus de Fuentenueva s/n, 18071, Granada, Spain

THANK YOU